

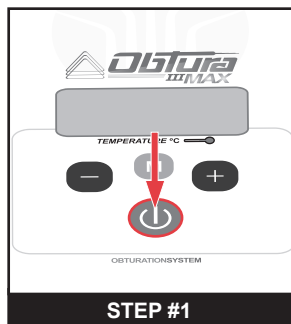


OBTURATION SYSTEM

# CLEANING INSTRUCTIONS.

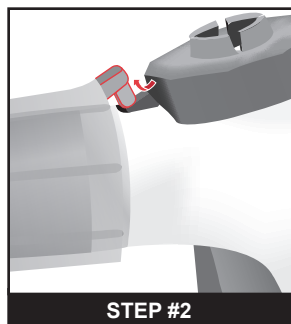
## Regular Maintenance (Day to Day Cleaning)

**Tools you will need:** Multi-Tool • Cleaning brush and Cleaning solution • Disposable cloth (napkin, gauze, etc.)



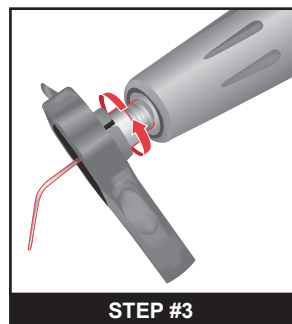
**STEP #1**

Prior to cleaning, ensure that your Obtura III MAX unit is turned off, fully cooled and unplugged.



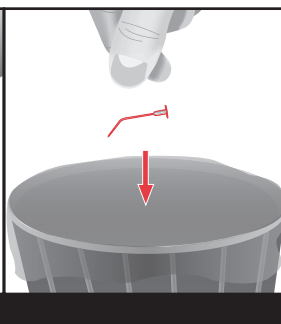
**STEP #2**

Unlatch and remove the thermal protector using the Multi-Tool.



**STEP #3**

Use the Multi-Tool to unscrew the needle nut from the heater thread.

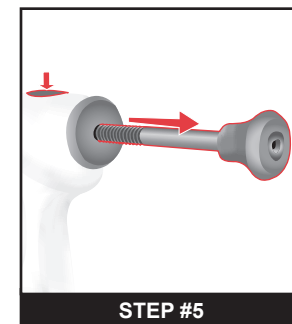


Set aside the needle nut. Dispose of the needle (for optimum performance, Obtura applicator needles should be used only once).



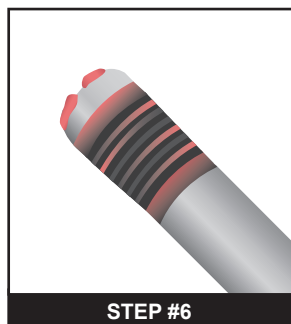
**STEP #4**

Extrude all remaining gutta percha by squeezing the handpiece trigger.



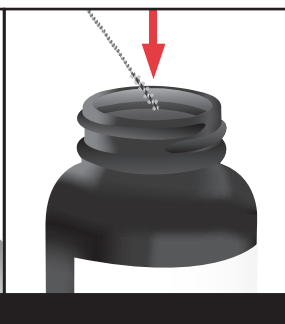
**STEP #5**

Push and hold the release button, removing the plunger shaft from the handpiece.

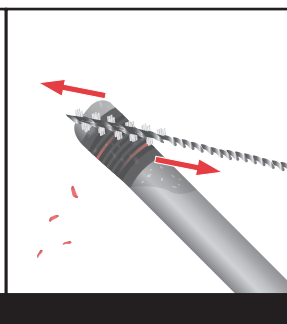


**STEP #6**

Inspect the plunger seal for gutta percha.



If gutta percha is present, dip the cleaning brush into the cleaning solution, fully coating the brush.

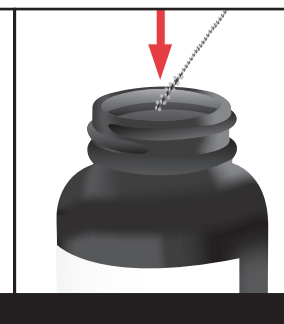


Clean the plunger seal with the cleaning brush in a back and forth motion until all visible gutta percha is cleared.

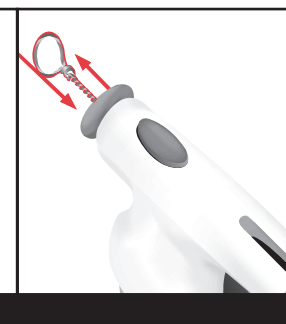


**STEP #7**

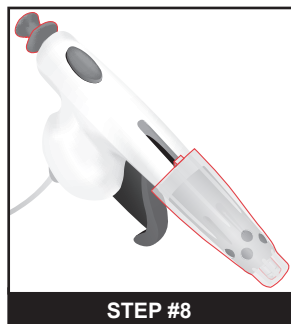
Inspect the inside of the handpiece shaft for any visible gutta percha.



If gutta percha is present, re-dip the cleaning brush into the cleaning solution, fully coating the brush.



Place the cleaning brush inside the handpiece shaft and clean in a back and forth motion until all visible gutta percha is cleared.



**STEP #8**

Reassemble all components in the reverse order from which they were detached.

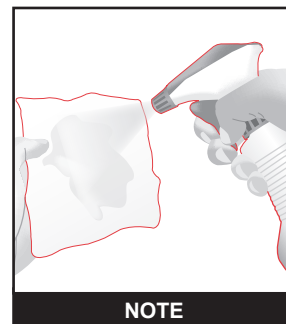


Place the handpiece back on its cradle.



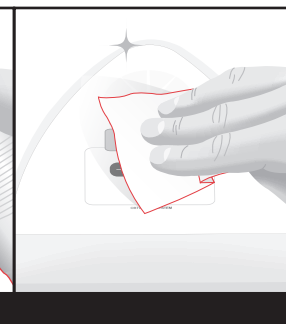
**WARNING**

At no point should any part of the Obtura III MAX handpiece be submerged into the cleaning solution.



**NOTE**

For optimal care, use Birex® solution to clean, disinfect and deodorize your Obtura III MAX unit.



Always spray cleaning solution into a disposable cloth, then wipe down. Never spray directly onto the unit.